



Blueway # 26

Bulltown Flats

www.BerkeleyOutdoorLife.com





Convenient Functionality Built into This Guide

Map 1 of 2 - Santee Canal N. Moultrie



This map corresponds with route directions numbered 1 - 5, and 8.


On Map Pages:

Using your phone (or touch-screen enabled device), tap any of the route numbers to bring up a map of the exact location!



Route - Santee Canal N. Moultrie

Route Directions

1	From the boat ramp at Angel's Landing Marina, turn left, heading in a northeast direction. LOOK →  Click on individual route directions to bring up map of exact location!
2	At 0.1 mile, pass by island of tall grass. It's best to pass on the left side, closest to the mainland. Continue in slight northeast direction.
3	Pass by tip of island at 0.6 miles. Begin to even more northeastern direction towards another large island 0.3 mile away.
4	At 0.9 mile, paddle around southern tip of island, head into center of bay, paddling towards upper right corner of bay. This is where the canal opening is located.
5	Enter Santee Canal at 1.4 miles. This is a narrow, shallow waterway (no more than 20 yards wide and maintains a depth of 4-5 feet). Enjoy the calm waters of the Santee Canal. Keep an eye out for wildlife, including alligators, deer, wild boar and a variety of waterfowl.
6	Come to railroad crossing over the canal at 2.8 miles. The canal will begin to narrow shortly after the railroad crossing.
7	At 3.2 miles, come to the obvious end of the canal. Return the same way you came.
8	Option. Turn a hard left when leaving the canal and head into a field of lilies. This is picturesque and worth the extra 20-30 minutes, particularly when everything is in bloom!

On Route Direction Pages:

Tap anywhere in the individual direction boxes to bring up a map of the exact location!



Bulltown Flats

26



Paddling beautiful north Lake Moultrie in the Bulltown Flats.

Summary

The area between Angel's Landing and the historic Santee Canal, and just a little northeast of the Canal on Lake Moultrie offers the adventurous paddler a full day's exploration of nearly a dozen coves and tributaries that rarely see people. The water is too low for motorized boats, so you're guaranteed to be alone. You'll see an abundance of larger waterfowl and birds of prey, along with the occasional deer. You'll also be treated to eerie cypress and tupelo trees, and scenery you won't find anywhere else on the lake.

Difficulty

Moderate

Distance

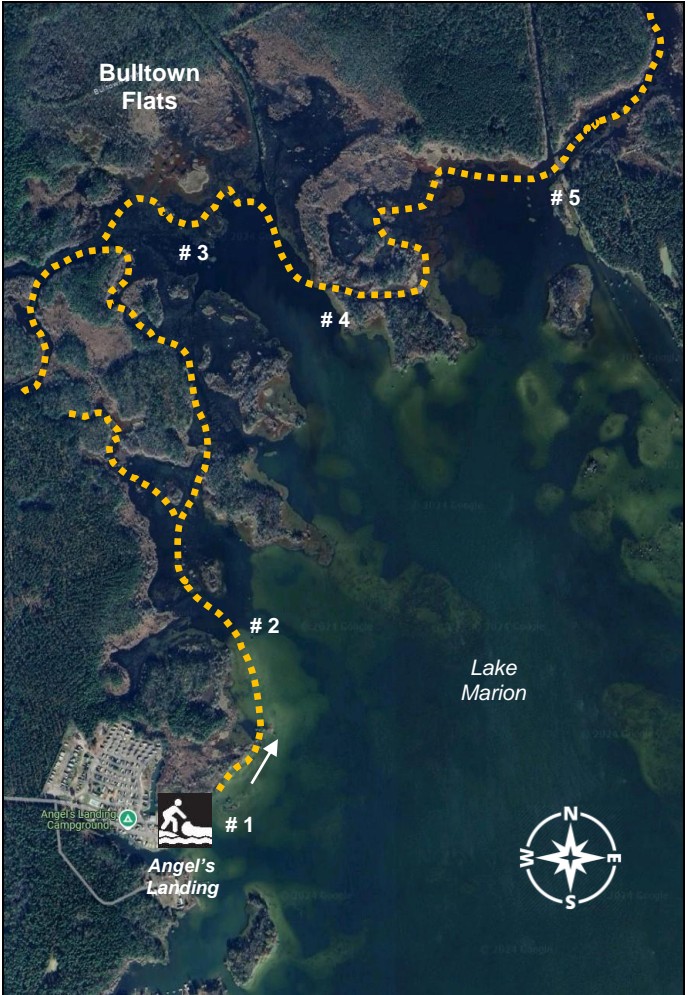
6 - 8 miles, best suited as exploration

Time

3 - 4 hours

Crowds	Usually very light boat traffic.
Boat Type	Kayaks or canoes 12 feet or longer. Paddle boards are not recommended.
Put In / Take Out	Angel's Landing Marina, 1556 Viper Road, Pineville, SC 29468, 800-315-3087. <u>GPS</u> : 33.381196, -80.091654 33°22'52.3"N, 80°05'30.0"W <u>Directions</u> : All GPS and mapping applications recognize this address.
Fees/Permits	\$5.00 parking fee (as of late 2018)
Current	Negligible, generally south direction
Tidal Influence	None
Precautions:	Winds above 10 MPH can be tough for a paddler on Lake Moultrie. There is a lot of open water for wind to intensify and cause waves/whitecaps. There are hundreds of tree stumps just inches below the water's surface. These can flip a paddler if a boat gets wedged on top. Tip : these stumps can usually be seen with polarized sunglasses.

Map – Bulltown Flats



This map corresponds with route directions numbered 1 - 5 on page 6.

Route Directions - see map on page 5	
1	Leave the boat ramp and head north, staying close to the shoreline.
2	After 0.4 mile, enter the first large cove to the northeast. From here, begin your exploration. This area and the 0.8 mile have numerous coves, thickets and tributaries you can paddle into (depending on water level and vegetation). Examine the map on the previous page for suggestions on places to check out!
3	Begin paddling east across the top of Lake Moultrie, then turn south.
4	Approximately 0.4 mile south of the top of the lake is a scenic and fun cut-through. If the water levels are too low or vegetation is too dense, proceed around the southern tip of this peninsula.
5	To the south and east of the entrance of the historic Santee Canal is a large opening. Paddle back as far as you can to explore even more coves. Return the same way you paddled out.

Bulltown Flats



Bald Eagles are a common sight on north Lake Moultrie.



Scenic, narrow path in the Bulltown Flats.